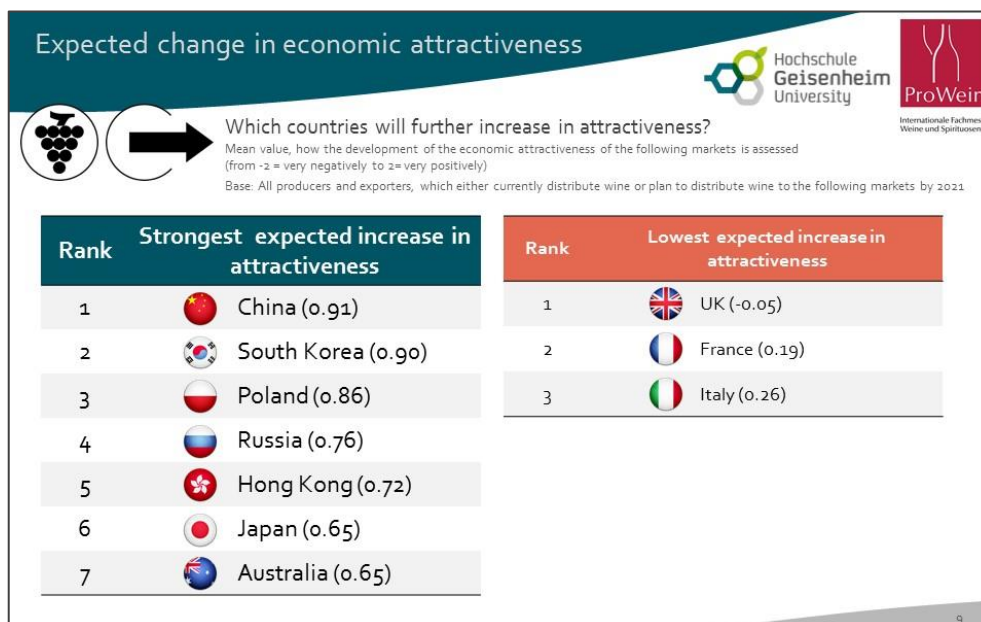


## Grafik 1 – Graphic 1



## Grafik 2 – Graphic 2



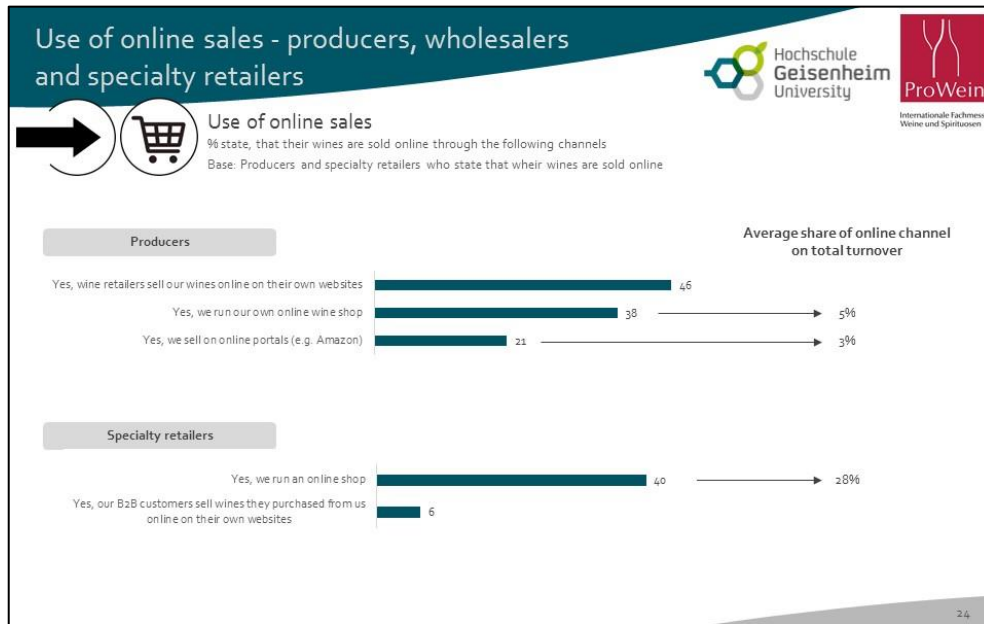
**Grafik 3 – Graphic 3**



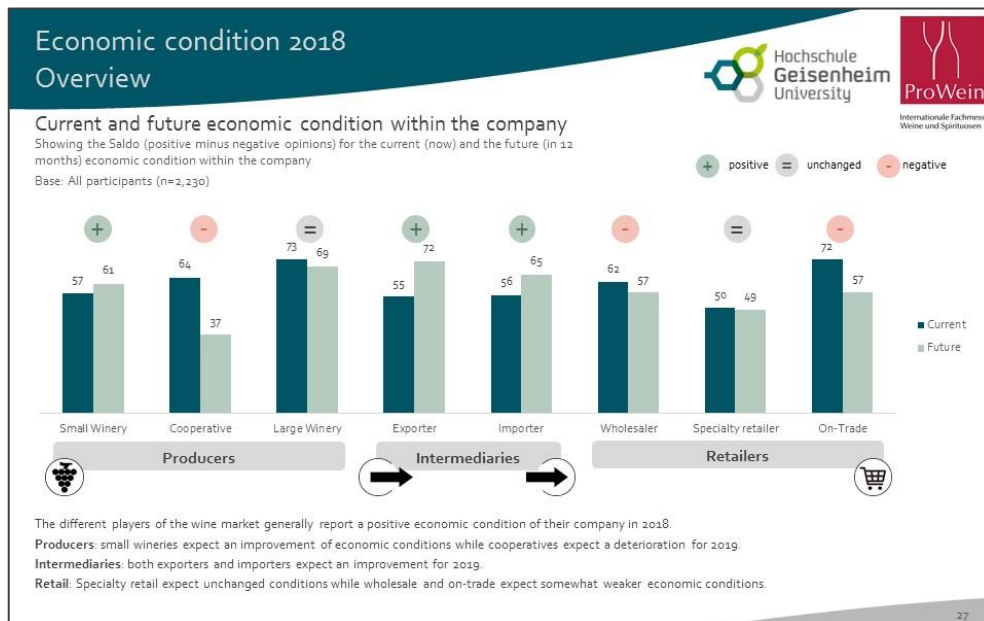
**Grafik 4 – Graphic 4**



## Grafik 5 – Graphic 5



## Grafik 6 – Graphic 6



### Press contact

Christiane Schorn, Monika Kissing, Brigitte Küppers

Tel.: +49 211 4560 991

[SchornC@messe-duesseldorf.de](mailto:SchornC@messe-duesseldorf.de); [KissingM@messe-duesseldorf.de](mailto:KissingM@messe-duesseldorf.de)

[KueppersB@messe-duesseldorf.de](mailto:KueppersB@messe-duesseldorf.de)

### Weitere Informationen unter:

[www.prowein.de](http://www.prowein.de) bzw. in den sozialen Netzwerken

Facebook: [www.facebook.com/ProWein.tradefair](https://www.facebook.com/ProWein.tradefair)

Twitter: <https://twitter.com/ProWein>